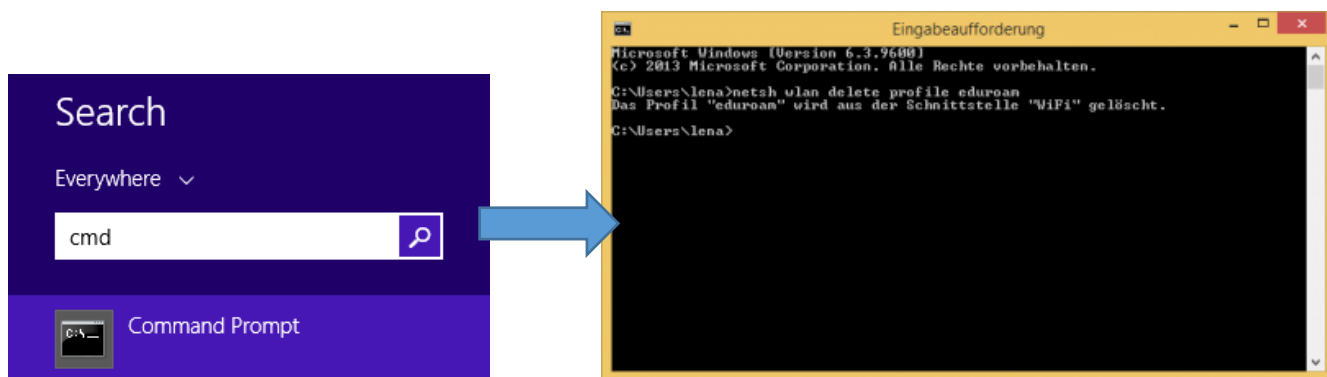


Eduroam configuration in Windows 8/8.1/10

1. Deleting the old eduroam configuration

Before configuring the eduroam wifi, please do the following to delete any previous configuration.

1. Press the Windows key on your keyboard
2. Type in „cmd“ and click to open the Command Prompt.



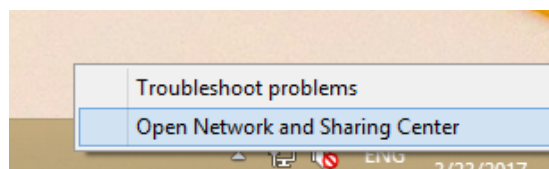
3. In the command line type in the following:

```
netsh wlan delete profile eduroam
```

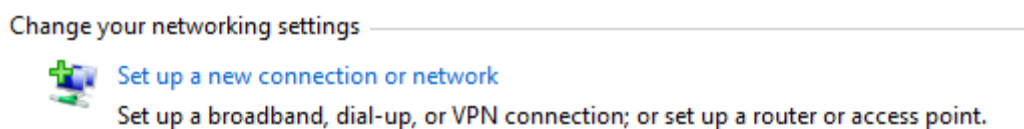
and press enter. The old eduroam configuration is now deleted and you can start over.

2. Configuration of the eduroam wifi

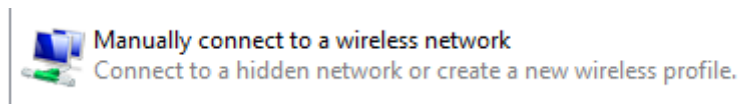
1. Please right click on the network icon in the task bar and select „Open Network and Sharing Center“, in order to set up Eduroam in Windows 8/8.1/10.



2. After that select „Set up a new connection or network“



3. Select „Manually connect to a wireless network“



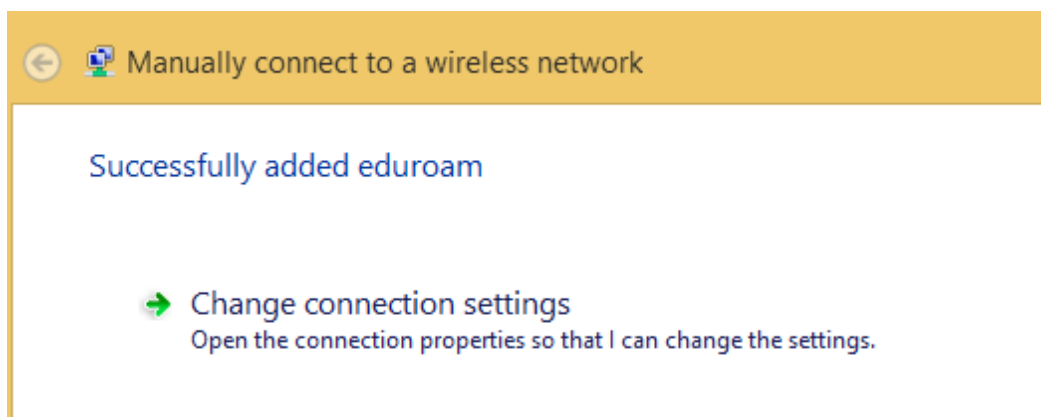
4. Type in the Network name „eduroam“ and select the Security type „WPA2-Enterprise“. Click next.

A screenshot of the Windows network settings window titled 'Manually connect to a wireless network'. The window has a yellow header with a back arrow, a wireless network icon, and the title. The main content area is white and contains the following fields and options:

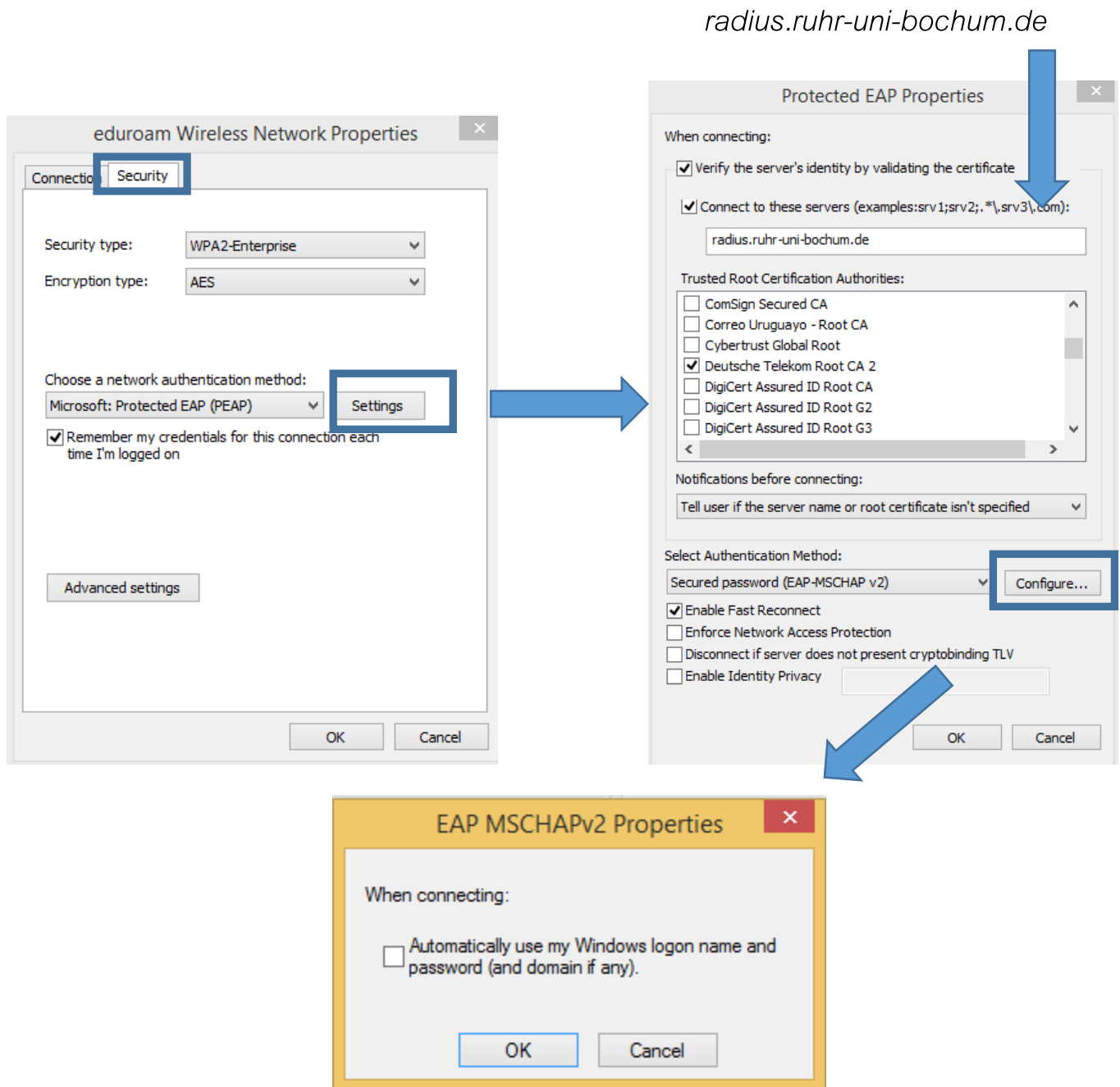
- Network name: eduroam
- Security type: WPA2-Enterprise (dropdown menu)
- Encryption type: AES (dropdown menu)
- Security Key: (empty text box) with a 'Hide characters' checkbox to its right.
- Start this connection automatically
- Connect even if the network is not broadcasting
- Warning: If you select this option, your computer's privacy might be at risk.

At the bottom right, there are two buttons: 'Next' and 'Cancel'.

5. In the upcoming window, click “change connection settings”.



6. After choosing the „Security“ tab, click the „Settings“ button, set up everything as seen in the following screenshots.



After setting everything up this way, you can continue with clicking OK in all windows and closing the last one.

9. When you try to connect to the Eduroam Wifi now, you will be asked to type in your LoginID and password. After doing so correctly, you will be connected. Your computer will remember this network and automatically connect to it the next time you are within the wifi range on campus.

Attention: Students who have an account at other universities that provide eduroam can put the domain name of their university after the username they have there, eg.: [Username@university.com](#). Please ask your home university for the correct account info and settings.

